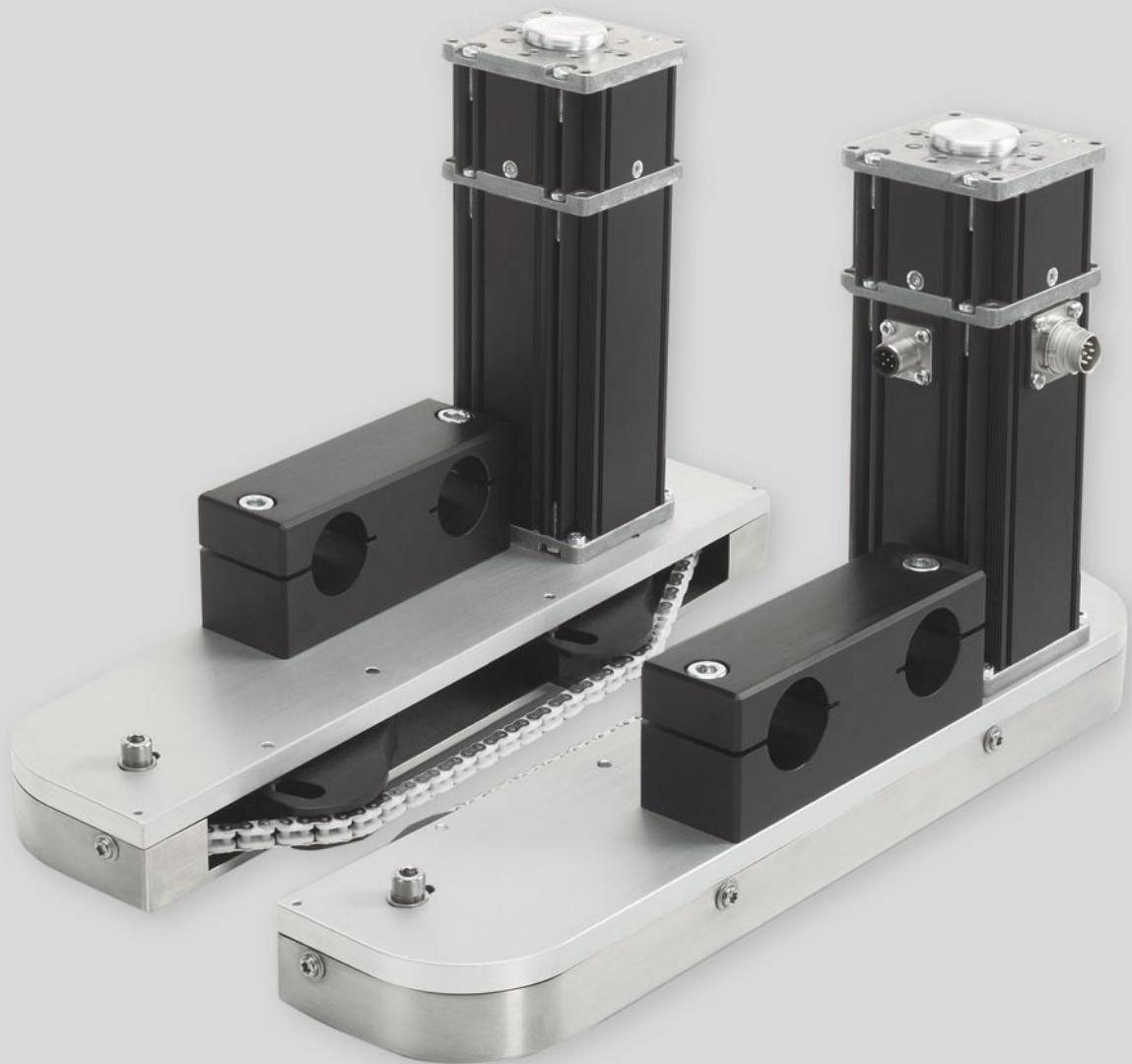


# Collamat® Flexoline

The Collamat® Flexoline Alignment Unit optimises the position and orientation of products for labelling. The unit with sprung-loaded, synthetic chain handles all product shapes and materials and corrects badly aligned products. The design allows for large product size variations. Speed synchronisation is achieved through an encoder, communicating to the servo motors. Product change-overs require minimum time. The Collamat® FlexoLine concept allows easy integration to existing lines and guarantees long-term reliability.





## FEATURES

- Functional design – The Alignment module can be adjusted for use on a wide range of product heights and shapes
- Synchronized speed – The speed of the servo motors are synchronized to the conveyor by an encoder
- High security – Adjustable power limitation of the motor to prevent injury or damage
- Safety – Smooth hold and alignment of the products, prevents damage of fragile products
- Product width compensation – The sprung loaded chain enables larger product width compensation
- Standardized mounting – The double tube mounting allows fast set-up on all conveyor belts

## TECHNICAL DATA

Max speed:	35 m/min
Chain width:	8 mm
Min. chain position:	13 mm above main conveyor
Drive unit:	Servo motor (Collamat firmware)
Speed synchronization:	Measured with encoder
Power supply:	24V DC
Communication:	CANopen
Options:	24V power supply unit, Encoder (CAN-Bus), CAN-Bus wiring
Approbation:	CE/Gost

All data are indicative and may be subject to alteration

HM Collamat AG  
 Pfeffingerring 201  
 CH-4147 Aesch

Phone: +41 (0)61 756 28 28  
 Fax: +41 (0)61 756 29 29  
 Web: [www.collamat.ch](http://www.collamat.ch)  
 E-mail: [contact@collamat.ch](mailto:contact@collamat.ch)

Member of HM Group

